



# COMMERCIAL HOT WATER



# Noritz Commercial Advantage

## Modular

The Noritz modular system is based on a single self-contained, interchangeable unit that can combine and communicate with like units to meet any hot water demand.

## Multi-System

Noritz units can be linked together with a single system controller, up to 24 units. This allows outputs of 9.1 million Btu/h and 316 gallons per minute.

## Modulation

Noritz fully modulating technology can track any hot water demand with pin point accuracy, only using the energy necessary to heat the water that is used.

## Intelligent System

In a multi-system setup, the Noritz commercial units will communicate with one another and work in unison to even out the load on each individual unit, maximizing output and system life. With the ability to modulate between multiple units with the use of a system controller makes Noritz commercial water heaters the most efficient water heating system on the market today.

## High Volume

1 - 24 Unit capacity. Up to 4.8 million BTU & 266 GPM



## Fully Modulating Burner

Noritz's fully modulating burner technology is the most precise and efficient method of heating high fluctuating demands of water.

Single Unit

**18 : 1 Turndown Ratio**

11,000- 199,900 BTU Range

24 Units (Modular)

**436 : 1 Turndown Ratio**

11,000- 4.8 Million BTU Range

(Specs based on NC199 model)

## Advantages

### • Redundancy

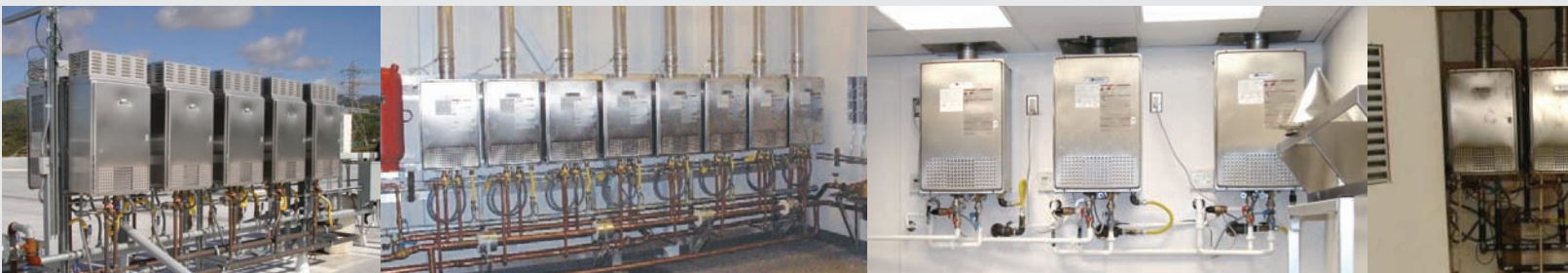
Any one of the Noritz commercial units on a multi-system can be taken offline and serviced without compromising your business. Hot water will still be provided by the other units.

### • Efficiency

Because of the modulating technology, a Noritz commercial system heats water using only the energy necessary to meet the demand, reducing energy consumption significantly and saving on water heating costs.

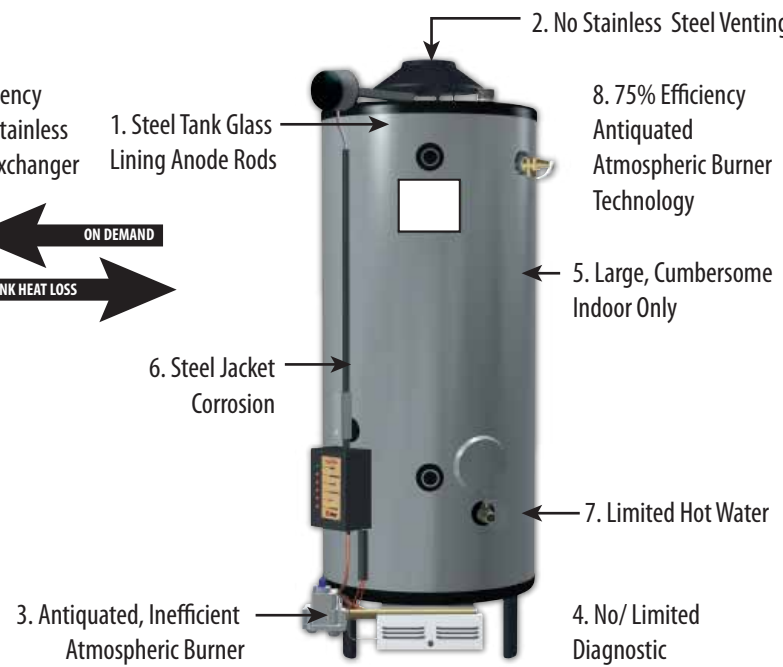
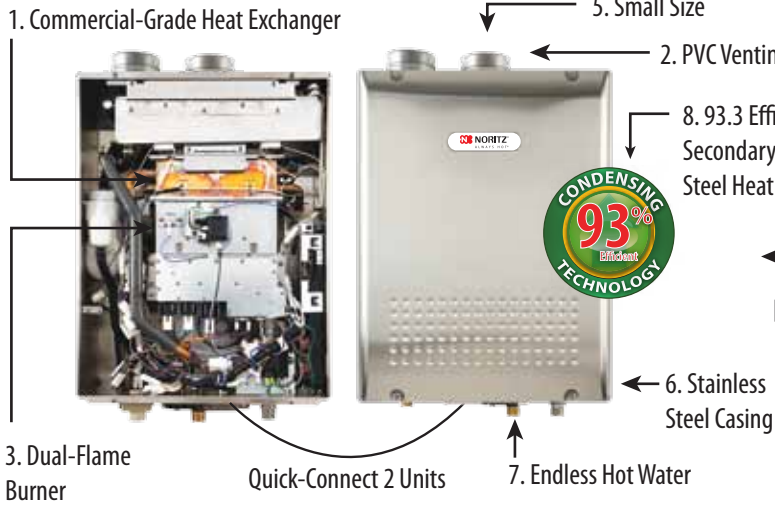
### • Versatile Installation

Noritz commercial units can be installed indoor or outdoor and because of its size and weight, they can be wall hung or racked, making spaces once thought impossible, possible.



# NCC199-DV

# 100-199



**Full 5-Year Warranty**



## Noritz 2 NCC199-DV Units vs. 100-199

Model Number	Flow	BTU Input	Temperature Rise									
			40°	50°	60°	70°	80°	90°	100°	110°	120°	130°
2 NCC199-DV Units	GPH	399,800	1116	888	744	636	552	492	444	408	372	348
D-100-199-AS	GPH	199,900	485	355	323	277	242	215	194	176	162	149
<b>DIFFERENCE</b>			<b>631</b>	<b>533</b>	<b>421</b>	<b>359</b>	<b>310</b>	<b>277</b>	<b>250</b>	<b>232</b>	<b>210</b>	<b>199</b>

NCC199-DV		100-199	
1	Commercial grade heat exchanger: Increased level of efficiency, stabilizing temperature and boosting performance for long life under heavy use.	1	Steel tank with glass lining and anode rods: The glass lining can be easily broken in transportation or installation. The anode rods harbor scale formation within the tank.
2	Less expensive PVC venting can be used due to reduced exhaust temperatures.	2	No stainless steel: This can amount to rust and deterioration of the venting.
3	Fully modulating burner: Increased level of efficiency, stabilizing temperature fluctuations and boosting the performance of the flow rate.	3	Antiquated, inefficient atmospheric burner: does not supply a stable flame to heat the water which creates a long recovery time.
4	Full diagnostics for easy maintenance and repair. Most parts of the heater can be replaced and are plug and play for quick repairs.	4	No or limited diagnostic: the heater cannot be maintained and will give no warning to system failures. Limited parts can be replaced. When the tank breaks, the entire heater must be replaced.
5	Small size: Noritz heaters take up less than 3 square feet of space and can be installed inside or outside on walls or racks. (DV requires indoor installation only.)	5	Large size: the tank heater takes up more than 9 square feet of floor space and can only be installed inside.
6	Stainless steel casing: allows Noritz units to be cleaned and sanitized and protected from its surroundings. NSF Approved	6	Steel jacket corrosion can shorten the life of the heater. The large tank heater casing can deteriorate in harsh commercial installations. Not NSF approved for kitchen installation
7	Endless supply of hot water. Noritz heaters can meet the demand of application and will never run out of hot water.	7	Limited hot water with long recovery times.
8	93.3% Efficiency. 100% Stainless Steel secondary heat exchanger. Using the heat produced by the exhaust gas to preheat the incoming cold water resulting in higher efficiency levels.	8	75% Efficiency. Antiquated atmospheric burner technology results in stand-by heat loss and higher costs.



Commercial-Grade



**84% EFFICIENCY**

Vent Options

SV

### NC380 ASME Series

- max temp setting: 180°
- temp settings: 100-180°
- 0.7 min gpm- 13.2 max gpm
- 534 GPH at 70° temperature rise
- NSF & ASME certified
- stainless steel casing
- 2-unit quick-connect
- up to 24-unit multi-system

<b>Dimensions</b>	29.7" (H) x 19.1" (W) x 11.8" (Depth)
<b>Weight</b>	105 lbs.
<b>Gas Consumption</b>	<b>NG</b> Max. 380,000 Btuh- Min. 22,500 Btuh
	<b>LP</b> Max. 380,000 Btuh- Min. 22,500 Btuh
<b>Capacity Range</b>	0.7-13.2 Gal./min.
<b>Thermal Efficiency</b>	80% (NG), 84% (LP)
<b>Temperature Outputs</b>	100-150°F (in 5°F Intervals), 160, 170, 181.4°F
<b>Included Accessories</b>	Remote Control& Cord, Anchoring Screws

Commercial-Grade



**84% EFFICIENCY**

Vent Options

SV DV

### NC250 ASME Series

- max temp setting: 180°
- temp settings: 100-180°
- 0.5 min gpm- 11.1 max gpm
- 360 GPH at 70° temperature rise
- NSF & ASME certified
- stainless steel casing
- 2-unit quick-connect
- up to 24-unit multi-system

<b>Dimensions</b>	24.4" (H) x 18.4" (W) x 9.4" (Depth)
<b>Weight</b>	62 lbs.
<b>Gas Consumption</b>	<b>NG</b> Max. 250,000 Btuh- Min. 11,000 Btuh
	<b>LP</b> Max. 250,000 Btuh- Min. 11,000 Btuh
<b>Capacity Range</b>	0.5-11.1 Gal./min.
<b>Thermal Efficiency</b>	84%
<b>Temperature Outputs</b>	100-150°F (in 5°F Intervals), 160, 170, 181.4°F
<b>Included Accessories</b>	Remote Control & Cord, Anchoring Screws

Commercial-Grade



**94% EFFICIENCY**

Vent Options

SV DV



### NCC199 Series Condensing

- max temp setting: 180°
- temp settings: 100-180°
- 0.5 min gpm- 11.1 max gpm
- 318 GPH at 70° temperature rise
- stainless steel casing
- 2-unit quick-connect
- up to 24-unit multi-system

<b>Dimensions</b>	SV Unit: 24.2" (H) x 18.3" (W) x 9.4" (Depth)
	DV Unit: 24.4" (H) x 18.4" (W) x 9.4" (Depth)
<b>Weight</b>	73 lbs.
<b>Gas Consumption</b>	<b>NG</b> Max. 199,900 Btuh- Min. 11,000 Btuh
	<b>LP</b> Max. 199,900 Btuh- Min. 11,000 Btuh
<b>Capacity Range</b>	0.5-11.1 Gal./min.
<b>Thermal Efficiency</b>	SV Unit: 93%, DV Unit: 93.3% (NG), 93.9% (LG)
<b>Temperature Outputs</b>	100-150°F (in 5°F Intervals), 160, 170, 181.4°F
<b>Included Accessories</b>	Remote Control & Cord, Anchoring Screws, Condensate Neutralizer

Commercial-Grade



**84% EFFICIENCY**

Vent Options

DVC OD

### NC199 Series

- max temp setting: 180°
- temp settings: 100-180°
- 0.5 min gpm- 9.8 max gpm
- 288 GPH at 70° temperature rise
- 2-unit quick-connect
- up to 6-unit multi-system

<b>Dimensions</b>	DVC Unit: 23.6" (H) x 13.8" (W) x 10.2" (Depth)
	OD Unit: 23.6" (H) x 13.8" (W) x 9.4" (Depth)
<b>Weight</b>	DVC Unit: 55 lbs. OD Unit: 47 lbs.
<b>NC199-DVC Gas Consumption</b>	<b>NG</b> Max. 199,900 Btuh- Min. 11,000 Btuh
	<b>LP</b> Max. 199,900 Btuh- Min. 11,000 Btuh
<b>NC199-OD Gas Consumption</b>	<b>NG</b> Max. 199,900 Btuh- Min. 12,000 Btuh
	<b>LP</b> Max. 199,900 Btuh- Min. 12,000 Btuh
<b>Capacity Range</b>	0.5-9.8 Gal./min.
<b>Thermal Efficiency</b>	84%
<b>Temperature Outputs</b>	100-150°F (in 5°F Intervals), 160, 170, 181.4°F
<b>Included Accessories</b>	Remote Control & Cord, Anchoring Screws

Model Number	Flow	BTU Input	Temperature Rise									
			40°	50°	60°	70°	80°	90°	100°	110°	120°	130°
NC380-SV-ASME	GPH	380,000	792	750	624	534	468	414	372	342	312	288
	GPM	380,000	13.2	12.5	10.4	8.9	7.8	6.9	6.2	5.7	5.2	4.8
NC250-DV-ASME	GPH	250,000	630	504	420	360	318	282	252	228	210	192
	GPM	250,000	10.5	8.4	7	6	5.3	4.7	4.2	3.8	3.5	3.2
NCC199-DV	GPH	199,900	558	444	372	318	276	246	222	204	186	174
	GPM	199,900	9.3	7.4	6.2	5.3	4.6	4.1	3.7	3.4	3.1	2.9
NC199-DVC	GPH	199,900	504	402	336	288	252	222	204	183	168	156
	GPM	199,900	8.4	6.7	5.6	4.8	4.2	3.7	3.4	3.05	2.8	2.6

[www.noritz.com/commercial](http://www.noritz.com/commercial)  
Toll Free: (877) 511-4328

Showroom Locations

- Headquarters • 11160 Grace Avenue, Fountain Valley, CA 92708 • Fax: (714) 241-1196
- Atlanta • 1220 Kennestone Circle, Suite 126, Marietta, GA 30066 • Fax: (770)422-0184
- Chicago • 861 Busse Road, Elk Grove Village, IL 60007 • Fax: (847) 472-6885
- Dallas • 720 Industrial Boulevard, Suite 200, Grapevine, TX 76051 • Fax: (817) 421-0033
- New York • 12 Skyline Drive, Hawthorne, NY 10532 • Fax: (914) 345-3288

